



motoalliance

23001 Industrial Blvd, Rogers, MN 55374 / 1-866-527-7637
www.motoalliance.com

MOTOALLIANCE PLOW MOUNT

MA11766

CFMOTO Uforce 1000

Thank you for purchasing our MotoAlliance plow mount. You now own a premium custom plow mount allowing you to use your plow with your SxS. Please note the following instructions and heed all warnings.

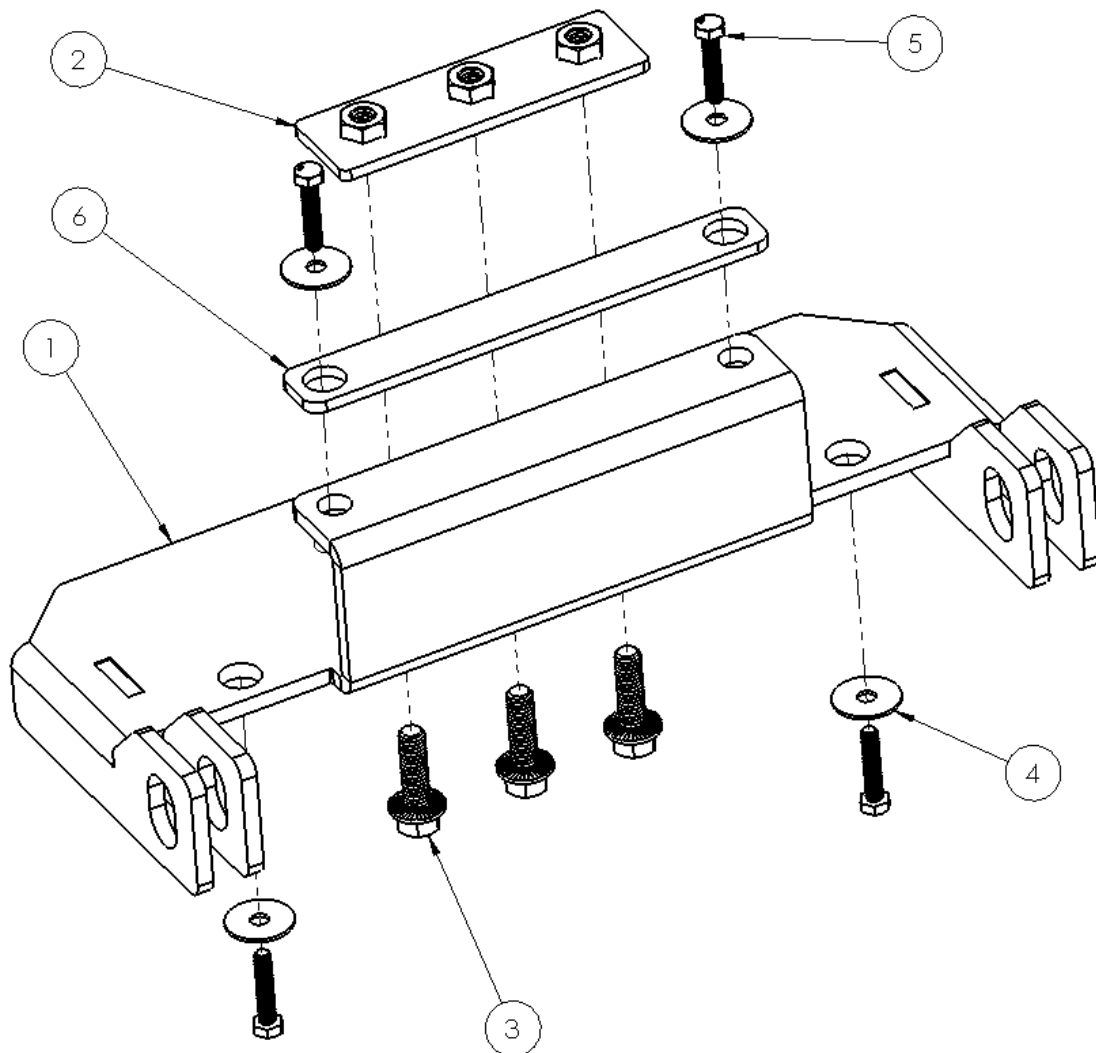
- Please use common sense when operating your SxS
- Be observant of moving parts causing entanglement use extreme caution!

SEVERE INJURY OR DEATH MAY RESULT IF YOU ARE NEGLIGENT.

Please verify that all hardware and parts are included in your package.

Kit Content:

Item Number	Description	Quantity
1	MA11766-W1 Main Mounting Plate	1
2	MA11766-W2 Rear Strap Weldment	1
3	3/8"-16 x 1.25" Serrated Flange Bolt	3
4	1/4" Fender Washer	4
5	M6-1.0 x 30mm Hex Head Bolt	4
6	MA11766-4 Frame Spacer	1



1. Remove front 2" Receiver as shown in **Figure 1**

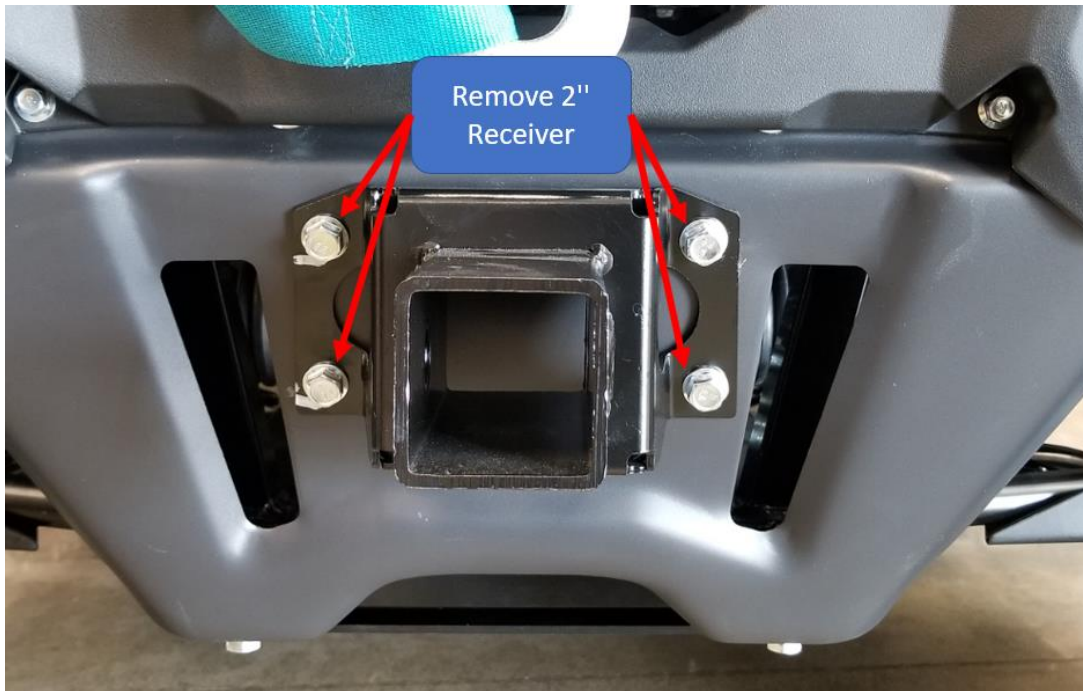


Figure 1

2. Remove the upper plastic brush guard as shown in **Figure 2**. Note the longer and shorter bolt locations.

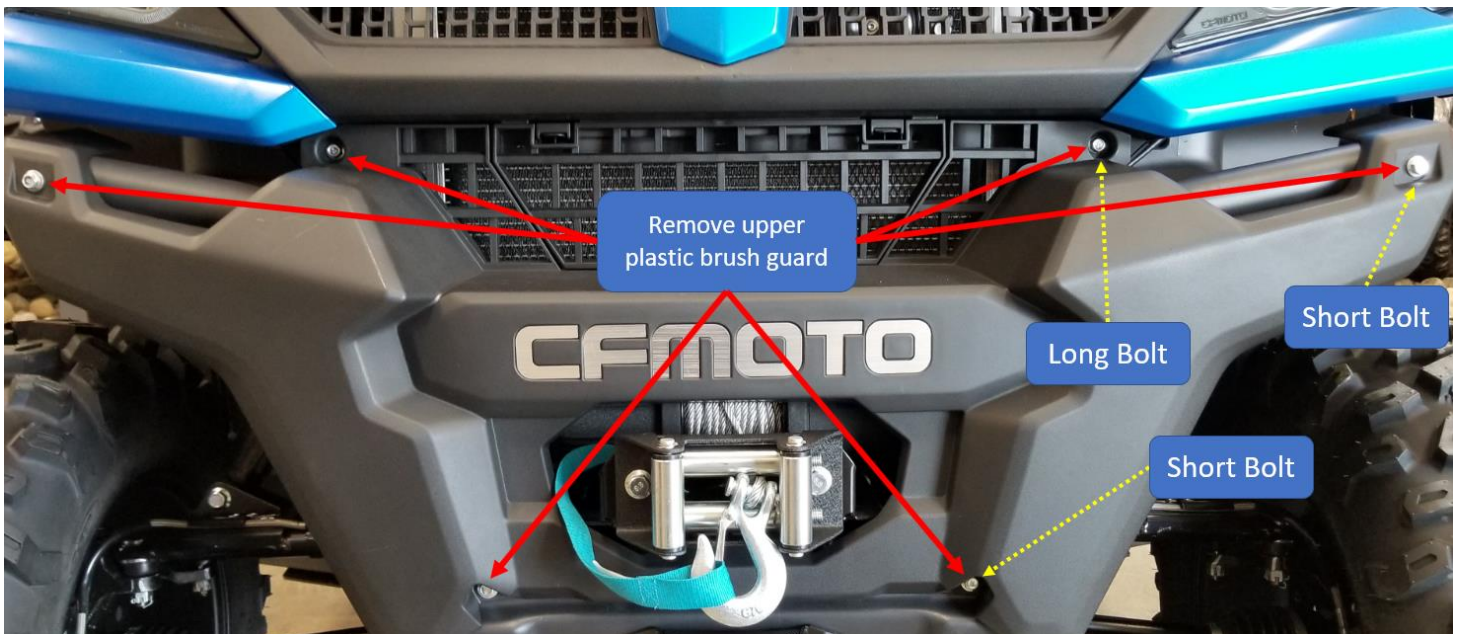


Figure 2

3. Remove metal bumper as shown in **Figure 3**

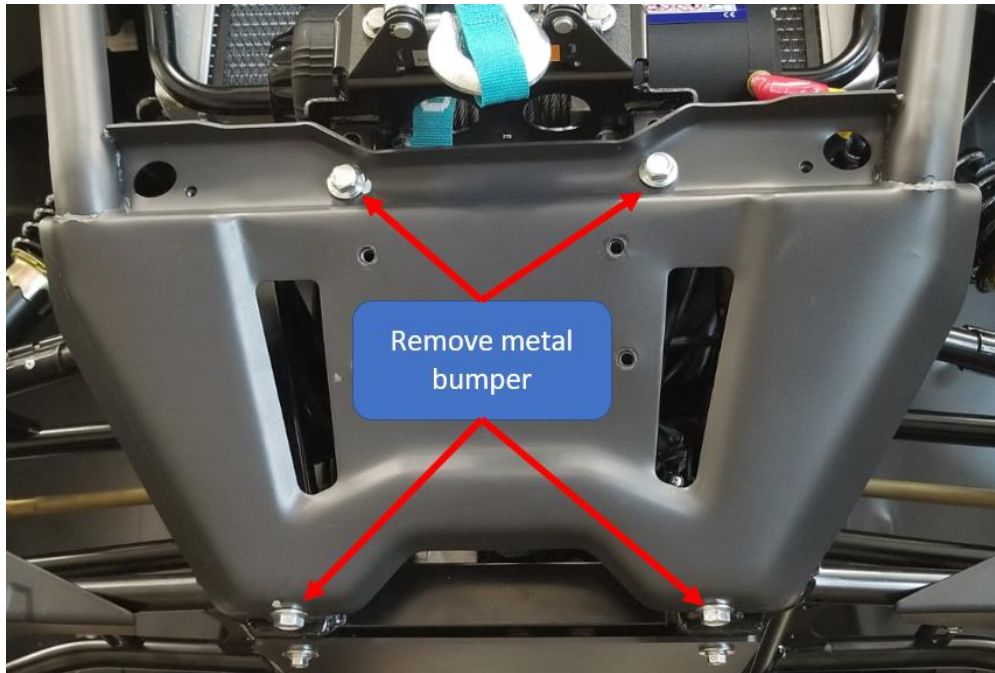


Figure 3

4. Remove the plastic skid plate as shown in **Figure 4**

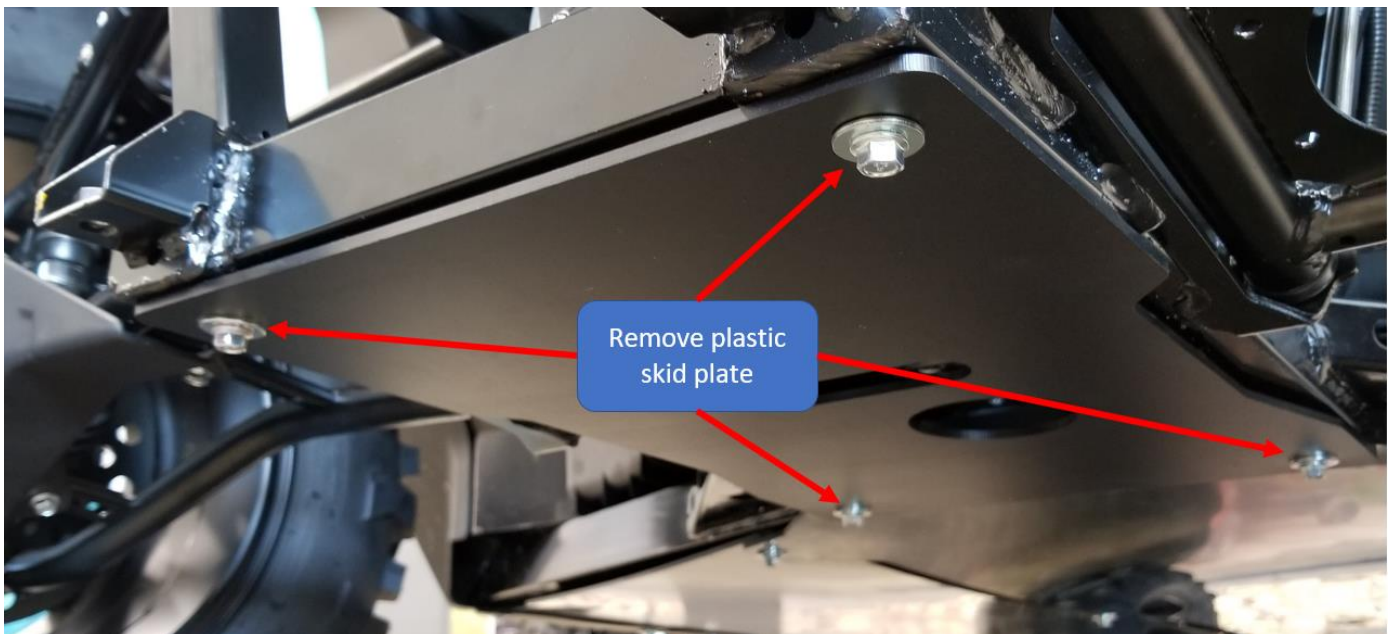


Figure 4

5. Position the spacer bracket over the pressed nuts of the cross frame as shown in **Figure 5**.

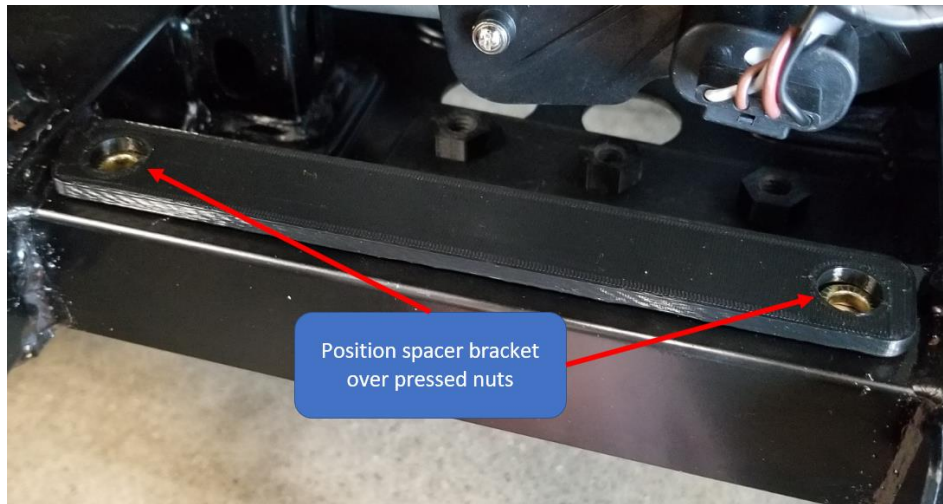


Figure 5

6. Position the main plow bracket over the spacer bracket so the top holes align with the holes in the frame cross support as shown in **Figure 6**

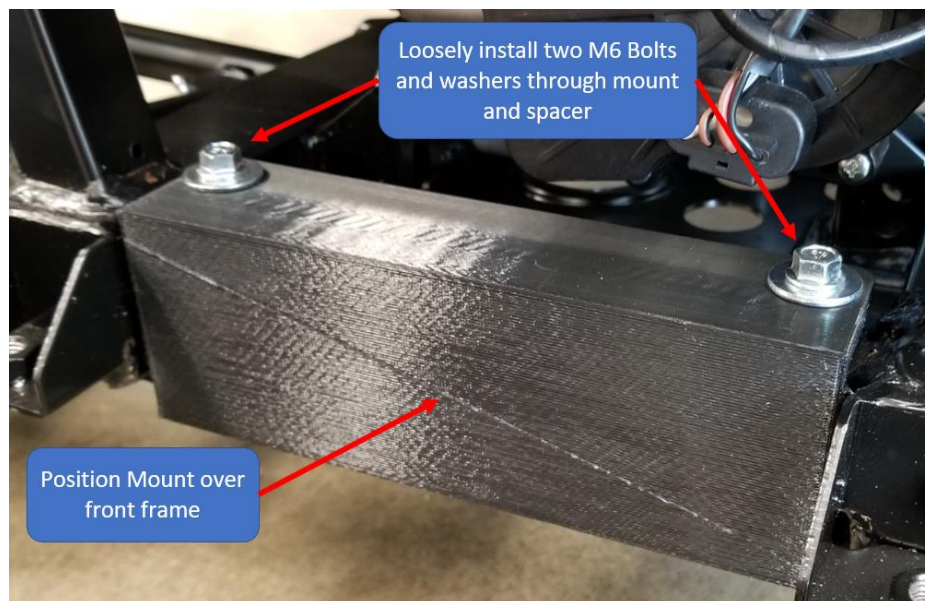


Figure 6

7. Install remaining M6 hardware. Install 3/8" Serrated Flange Bolts through the bottom of the main mount plate and into the rear buckle bracket as shown **Figure 7** and **Figure 8**



Figure 7

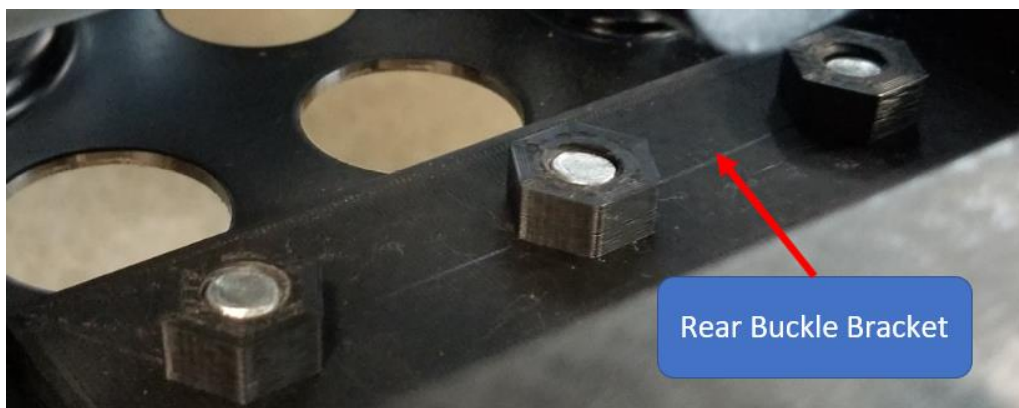


Figure 8

8. Tighten all hardware, reinstall metal and plastic bumpers in reverse order and install plow per manufacturers direction.

After First Time Use

Retighten all hardware as your frame may have flexed and the Plow Mount loosened.